




Technical Information
S1244/S1444/S1643

HMF Z001330

	1244/1444/1643	3	1	8100
	Contents	1 (1)		
		06.03.2008		

The 1244/1444/1643 Series

	Rev.	No.
Technical Data	02.05.2006	31 8110
Lifting capacity diagram, 1244-Z1	02.05.2006	31 8120
Lifting capacity diagram 1244-Z2	02.05.2006	31 8121
Lifting capacity diagram 1444-Z2	02.05.2006	31 8123
Lifting capacity diagram 1643-Z2	02.05.2006	31 8125
Dimension sketch, 1244-Z	02.05.2006	31 8140
Dimension sketch, 1444/1643-Z2	02.05.2006	31 8141
Dimension sketch, 1244/1444/1643-ZC (2 x HS)	02.05.2006	31 8142
Dimension sketch, 1244/1444/1643-ZC (2 x HS) C=12	11.04.2008	31 8143
Dimension sketch, 1244/1444/1643-ZC (2 x HS) C=6	11.04.2008	31 8144
Dimension sketch, 1244/1444/1643-Z slewing radius, TS	08.03.2007	31 8145
Position of top seat (TS)	06.03.2008	31 8146
Dimension sketch, stabilizers, A=3500/4600	02.05.2006	31 8150
Dimension sketch, hydraulic swing-up stabilizer legs	01.12.2006	31 8152
Extended hook suspension, Z2	02.05.2006	31 8160
Centres of gravity	02.05.2006	31 8175



1244/1444/1643

3 | 1 | 8110

Technical Data

1 (1)

02.05.2006

Performance	Unit	1244-Z1	1244-Z2	1444-Z2	1643-Z2
Loading group		B4	B4	B4	B3
Load moment	tm	10,7	10,3	13,7	15,4
Hydraulic reach	m	6,72	8,3	8,2	8,2
Hydraulic telescopic movement	mm	1580	3210	3210	3210
Lifting capacities	kg-m	2130 - 5,05 1630 - 6,5	2070 - 4,9 1525 - 6,5 1220 - 8,1	2840 - 4,8 2110 - 6,3 1620 - 8,0	3200 - 4,8 2380 - 6,3 1820 - 8,0
Slewing torque	kgm	2400	2400	2400	2400
Slewing angle	°	400	400	400	400
Max. heel at max. load moment	°	7	7	7	7
Slewing speed	°/s	30	30	30	30
Lifting speed, max. reach	m/s	1,4	1,7	1,5	1,0
Working pressure	Bar	280	280	280	310
Max. pump performance	l/min	1x60 / 2x50	1x60 / 2x50	1x70 / 2x60	1x50 / 2x40
Power consumption	KW	28 / 47	28 / 47	33 / 56	26 / 42

Dimensions

Height above chassis, parked in body (min.)	mm	2200	2200	2200	2200
Height above chassis, folded (no grab)	mm	2258	2290	2427	2427
Width, folded	mm	2500	2500	2500	2500
Length (incl. HS and extra valves)	mm	750	750	750	750
Stabilizer spread, standard	mm	3500	3500	3500	3500
Stabilizer spread, double ext.	mm	4600	4600	4600	4600

Weights

Standard loader, incl. 1 x HS	kg	1530	1640	1740	1740
Weight of stabilizers, standard	kg	210	210	210	210
Weight of stabilizers, std., hydr. ext.	kg	230	230	230	230
Weight of stabilizers, double., hydr. ext.	kg	295	295	295	295
Mounting kit	kg	55	55	55	55
Supplement 2 x HS	kg	65	65	65	65
Supplement 1x high pressure filter	kg	7	7	7	7
Oil in loader (stowing position)	kg	19,6	21,9	24,2	24,2



1244/1444/1643

3

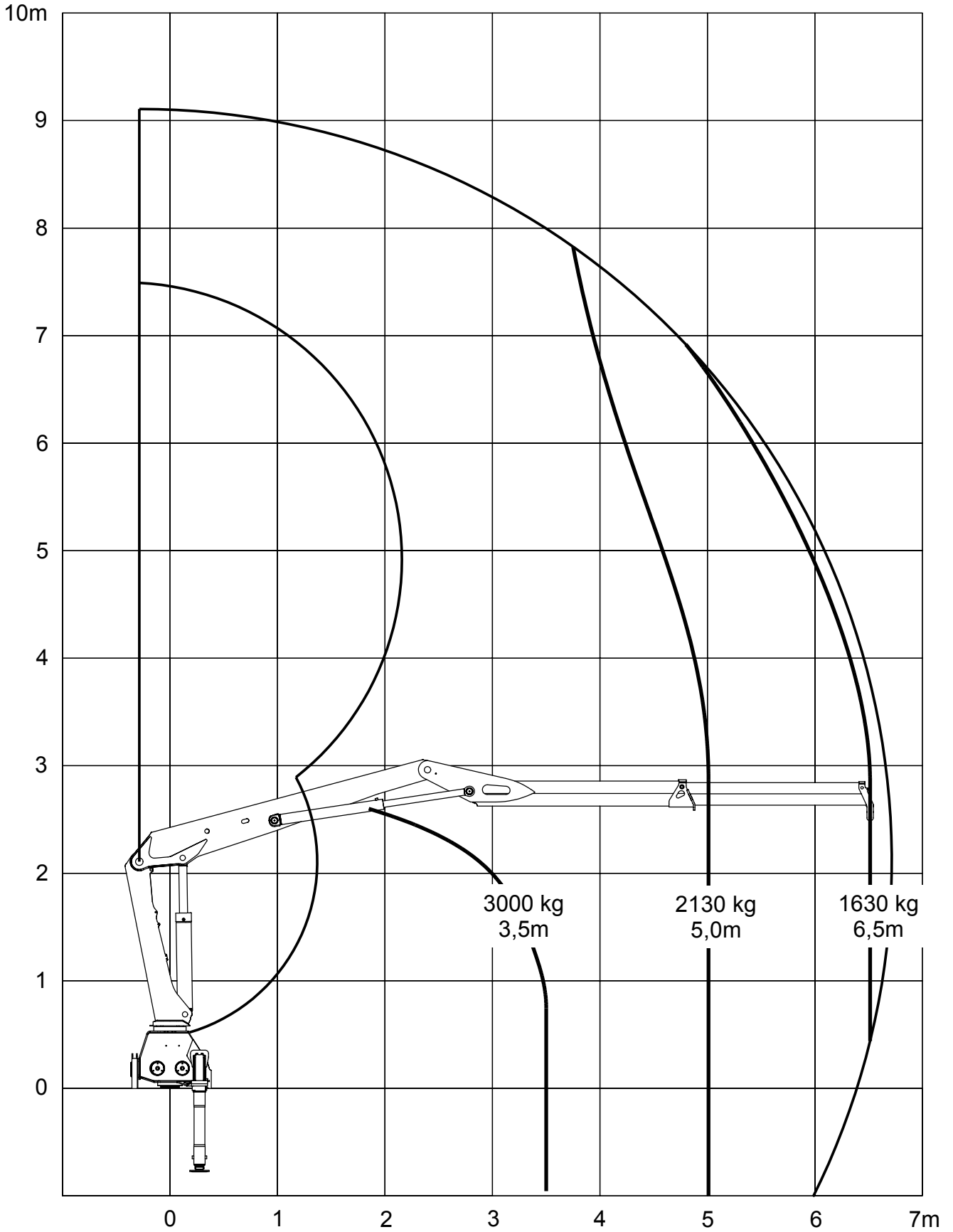
1

8120

1244 Z1

1 (1)

02.05.2006





1244/1444/1643

3

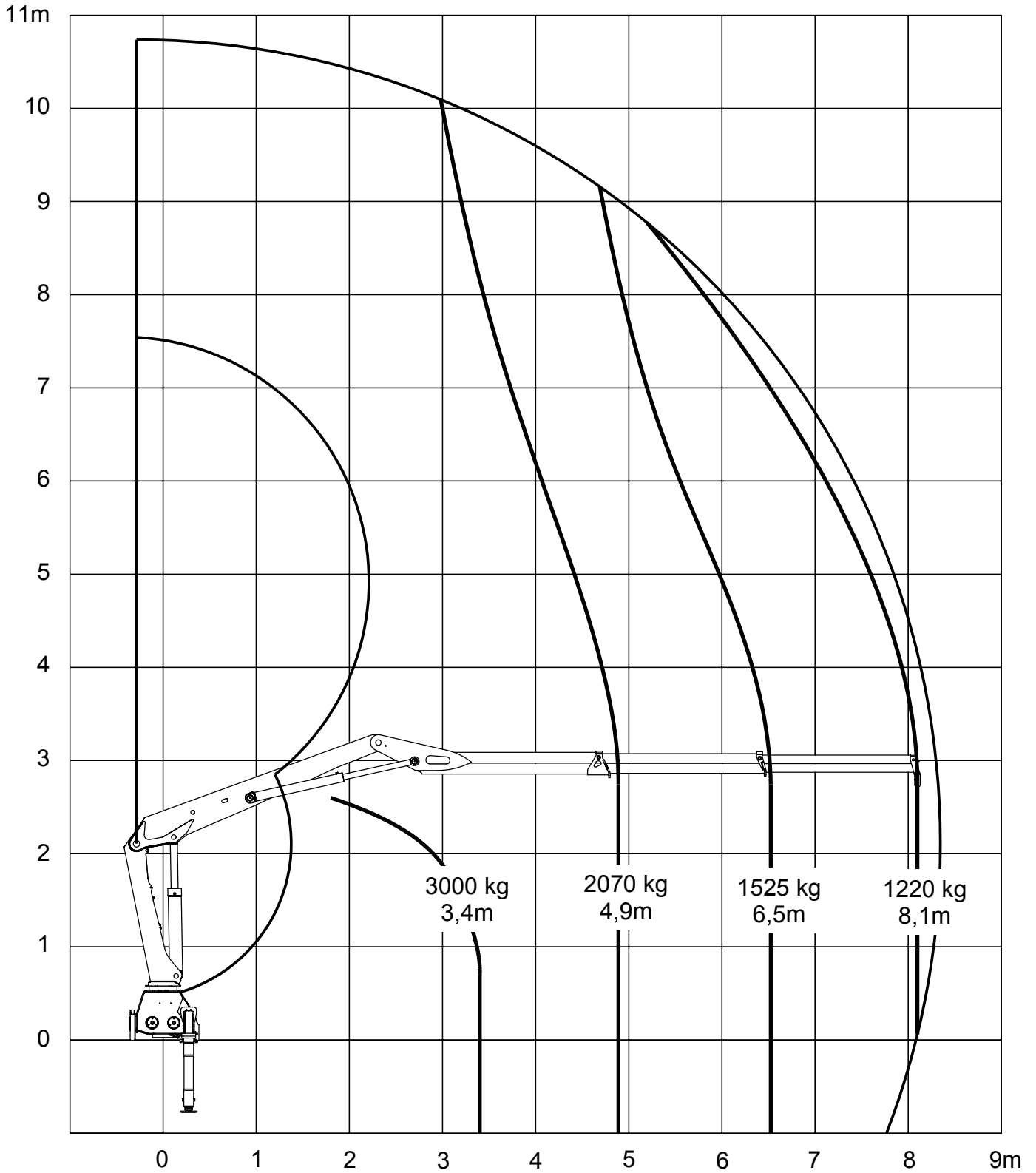
1

8121

1244 Z2

1 (1)

02.05.2006





1244/1444/1643

3

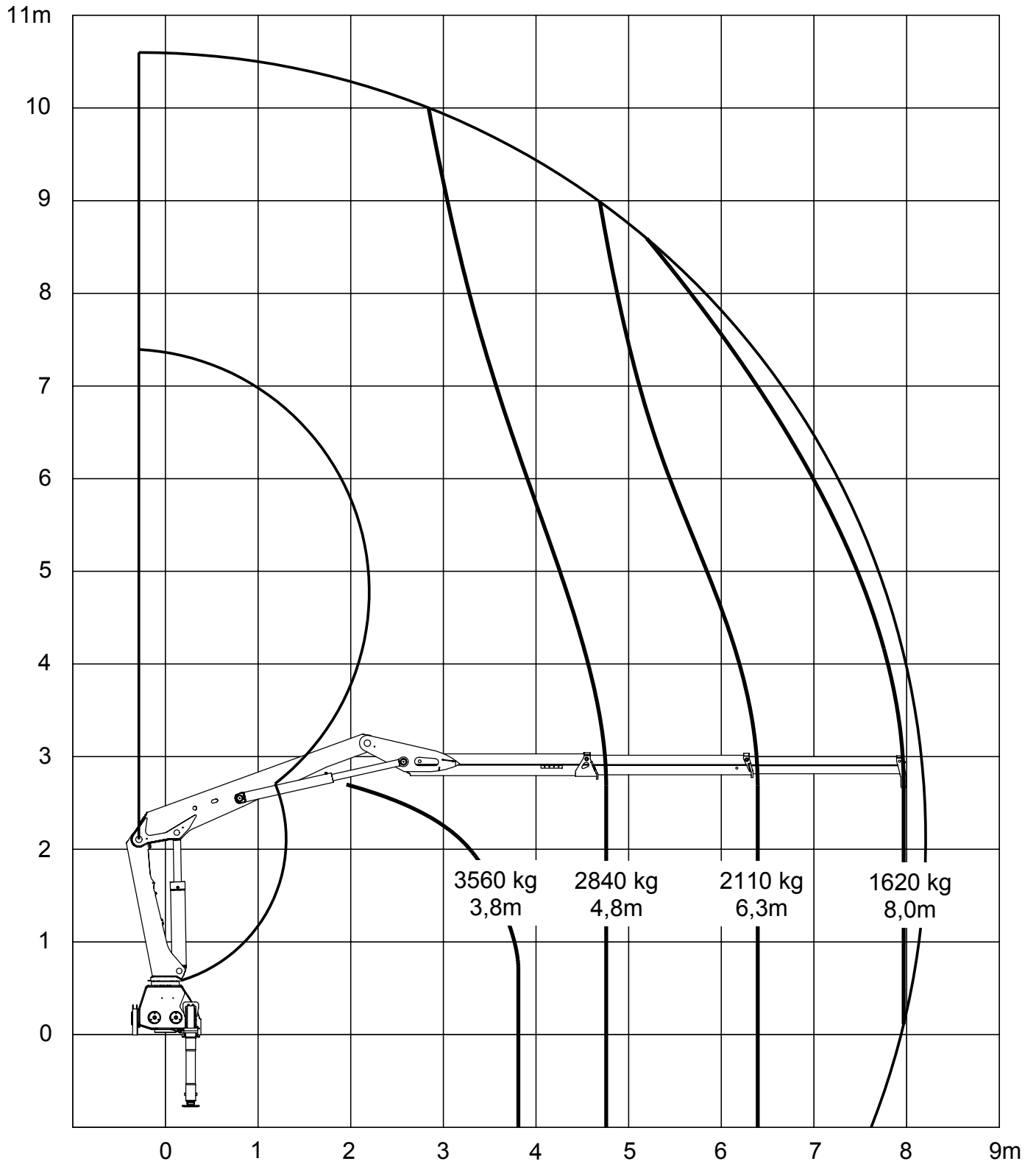
1

8123

1444 Z2

1 (1)

02.05.2006





1244/1444/1643

3

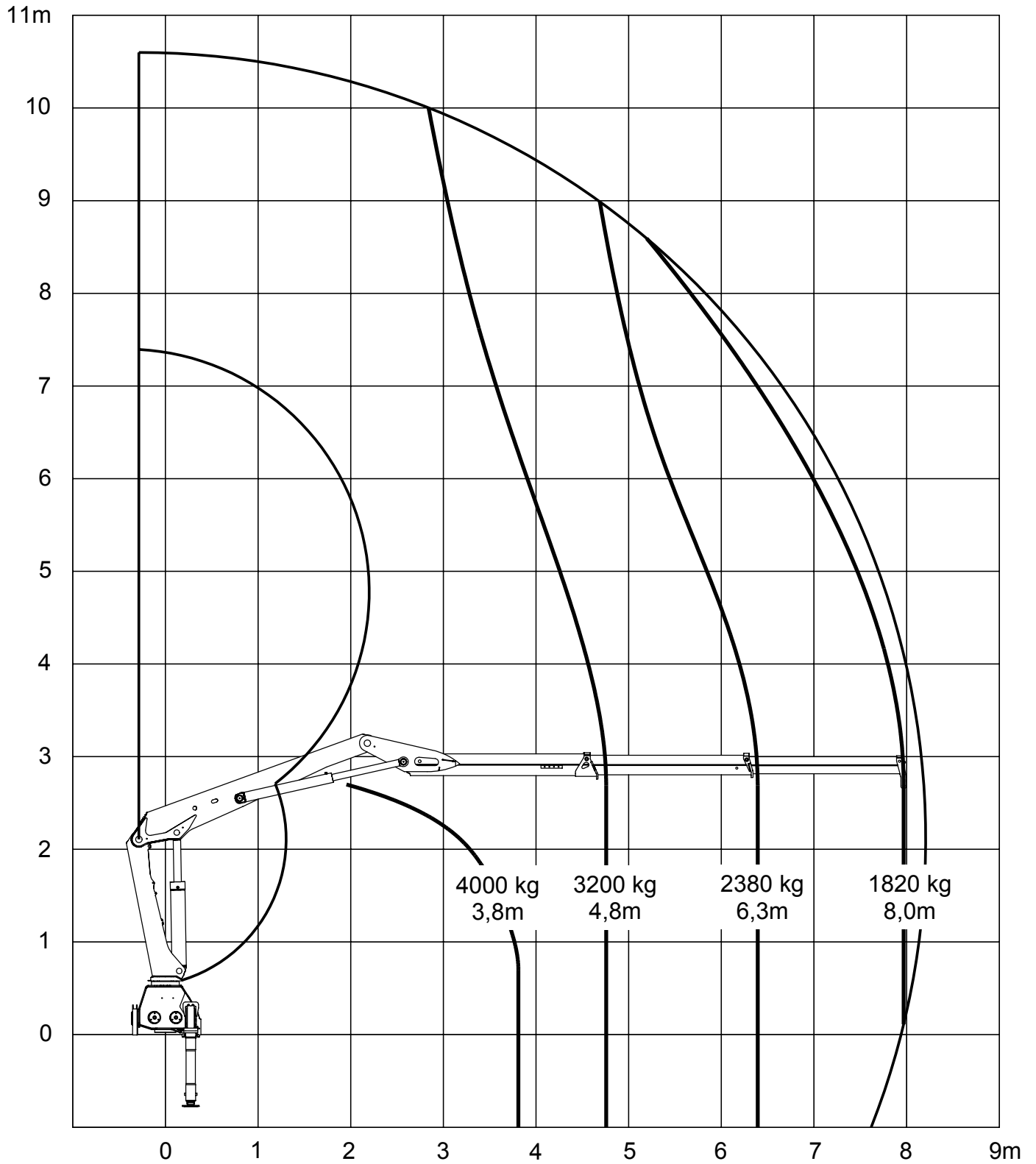
1

8125

1643 Z2

1 (1)

02.05.2006





1244/1444/1643

3

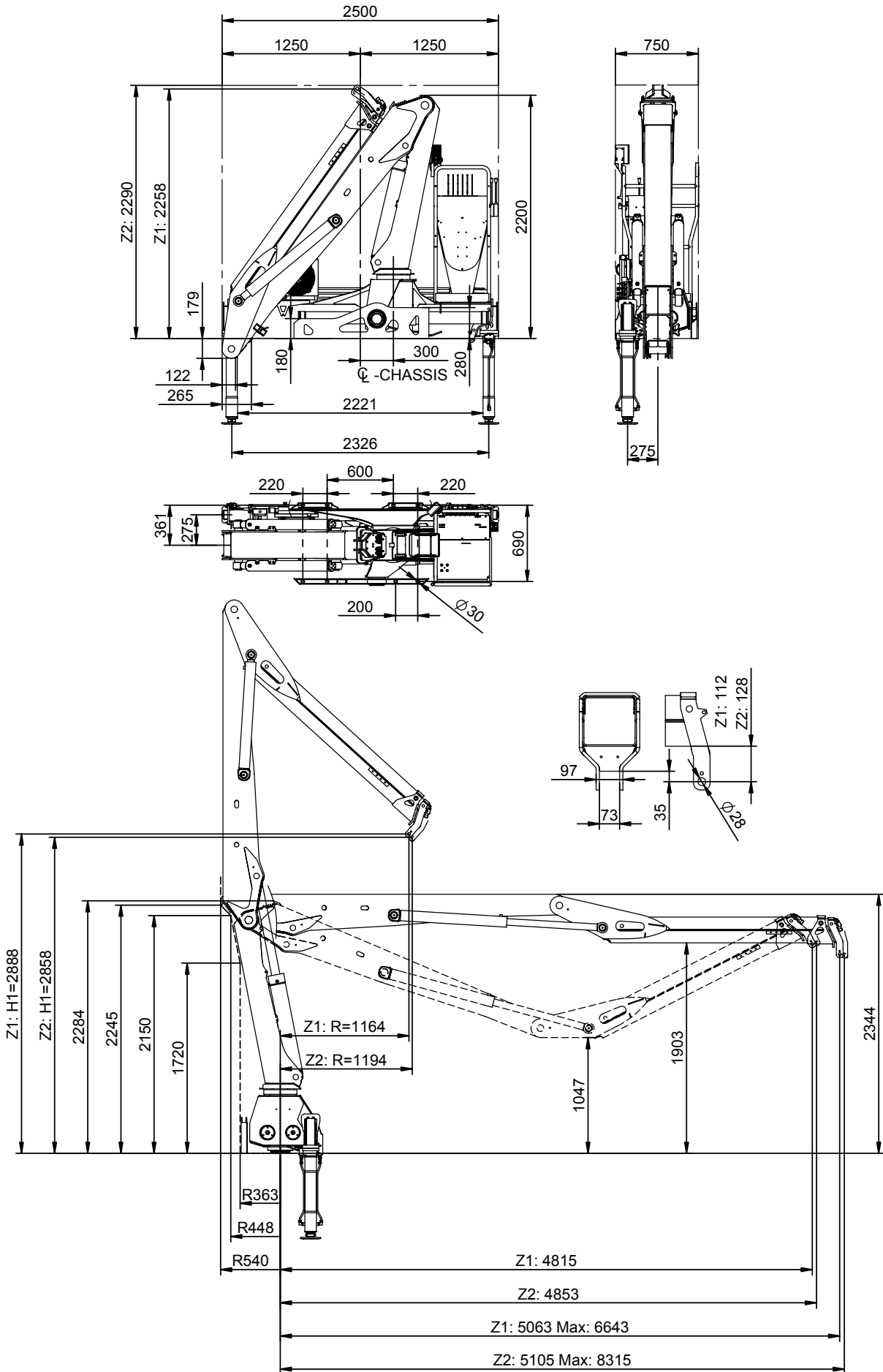
1

8140

1244 Z

1 (1)

02.05.2006





1244/1444/1643

3

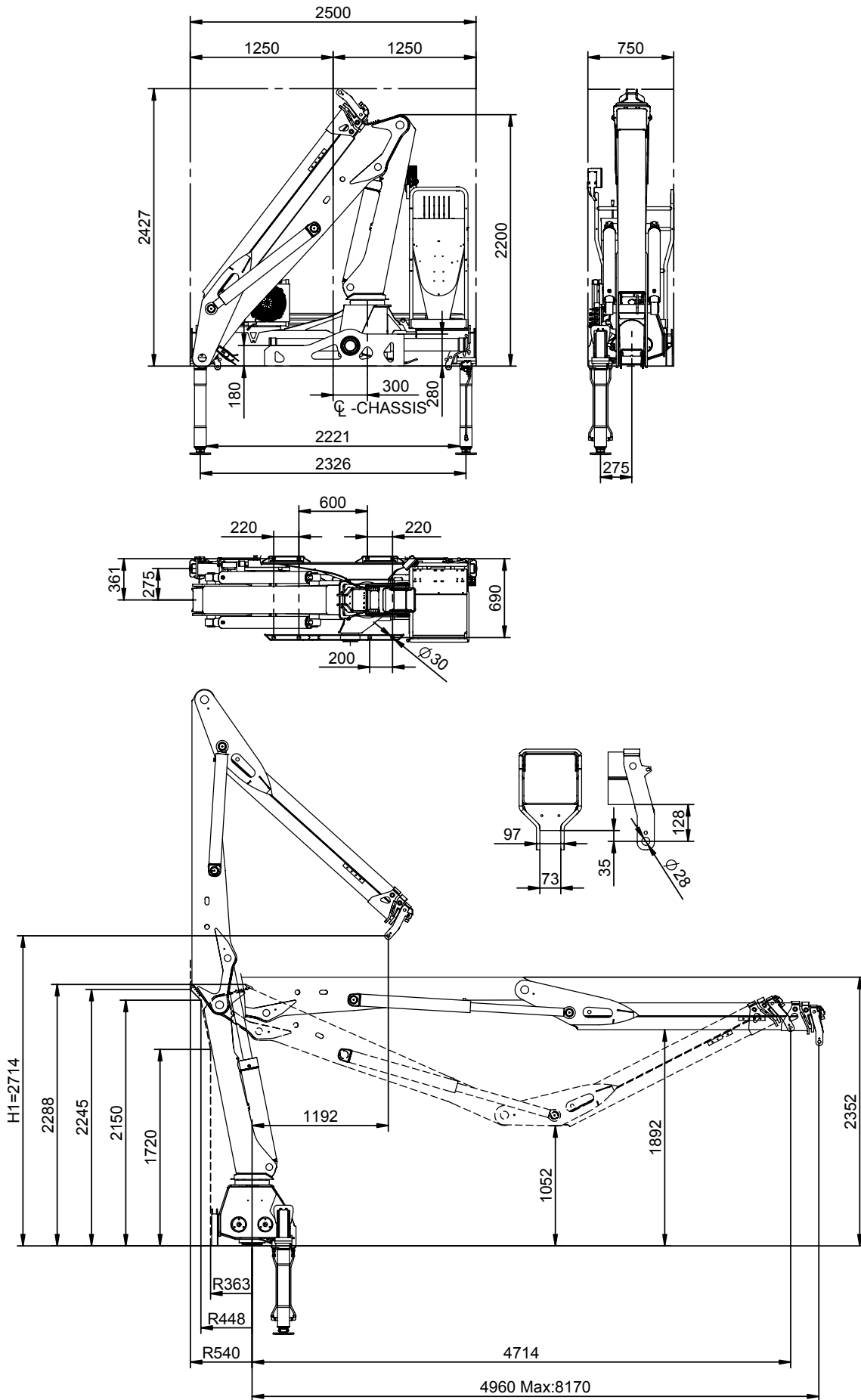
1

8141

1444/1643 Z2

1 (1)

02.05.2006





1244/1444/1643

3

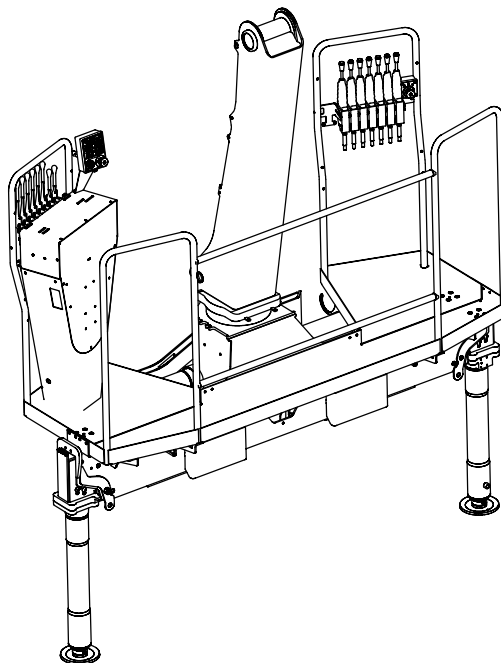
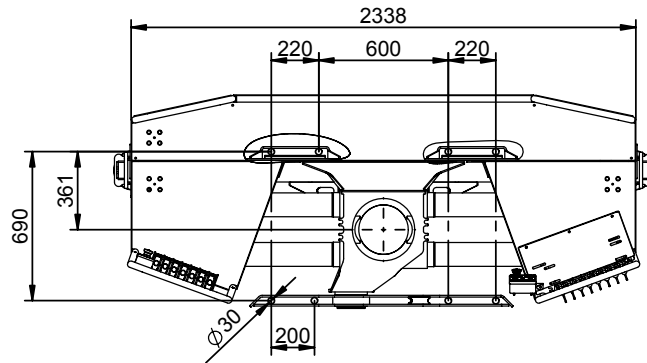
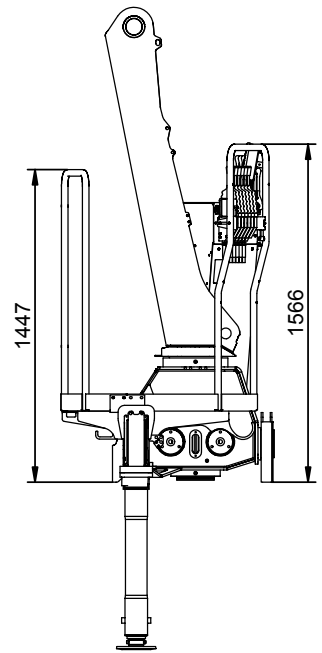
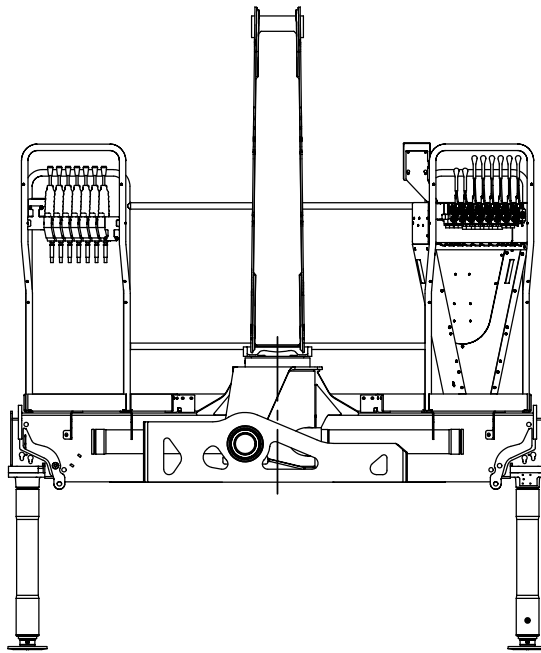
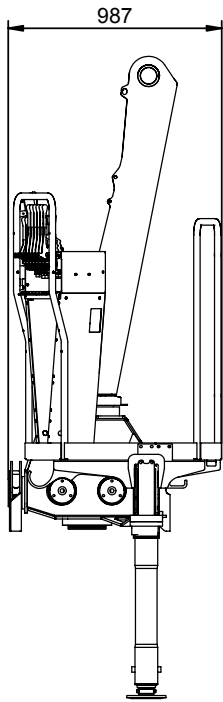
1

8142

1244/1444/1643 ZC

1 (1)

02.05.2006





1244/1444/1643

3

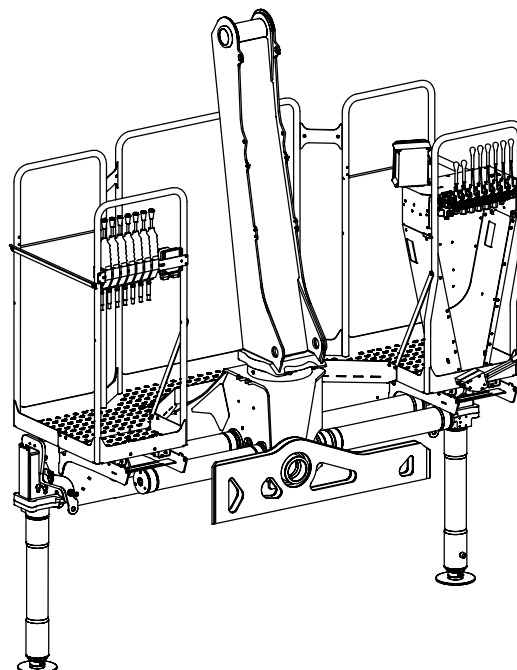
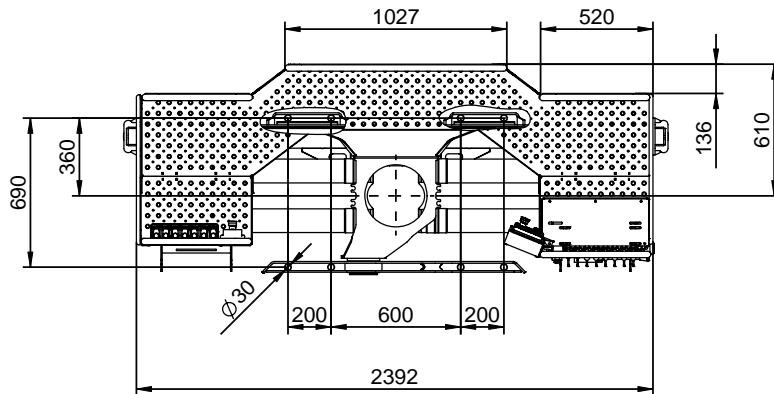
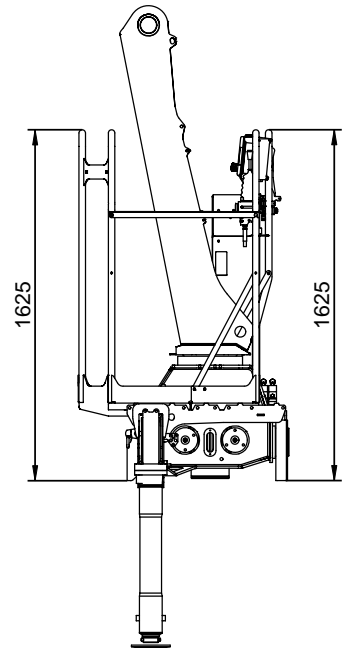
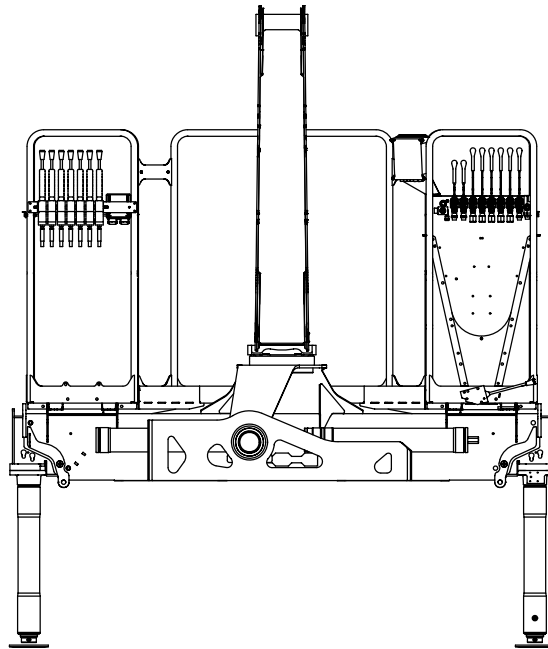
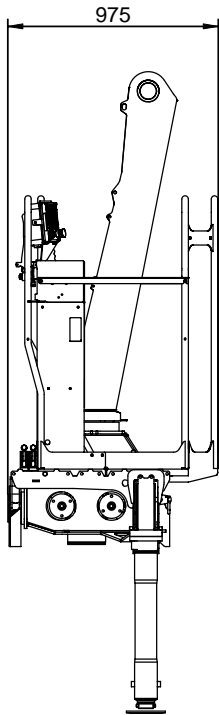
1

8143

1244/1444/1643 ZC C=kl.12
1244/1444/1643 ZC C=12
1244/1444/1643 ZC C=12.00

1 (1)

11.04.2008





1244/1444/1643

3

1

8144

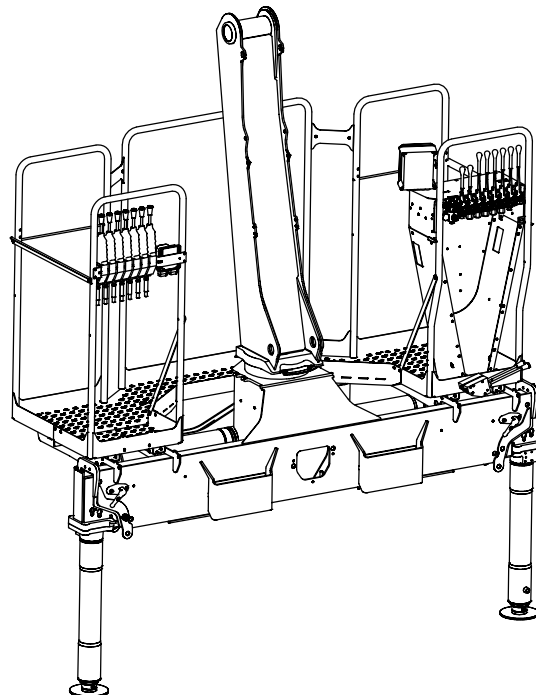
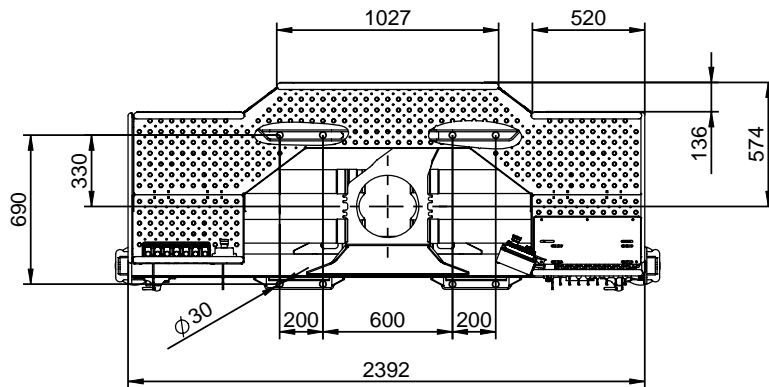
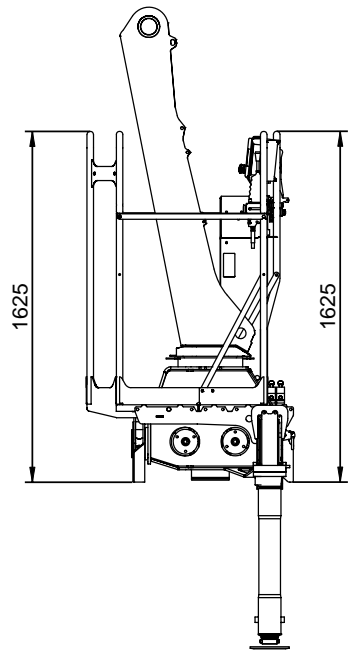
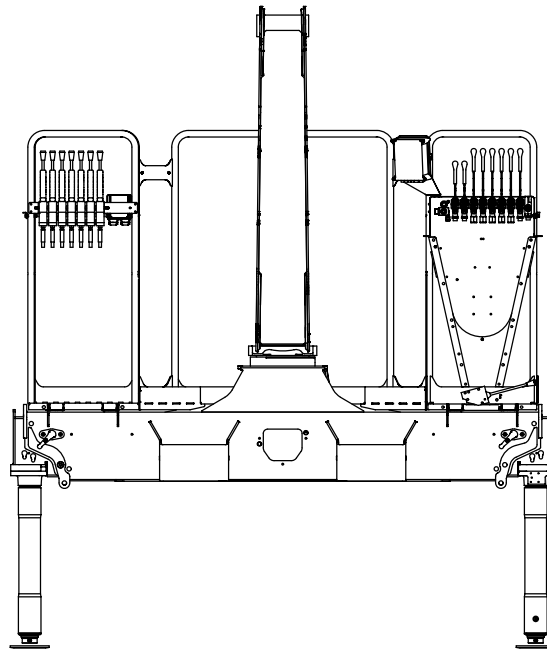
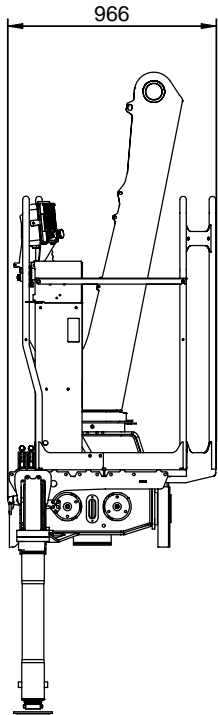
1244/1444/1643 ZC C=kl.6

1244/1444/1643 ZC C=6

1244/1444/1643 ZC C=6.00

1 (1)

11.04.2008





1244/1444/1643

3

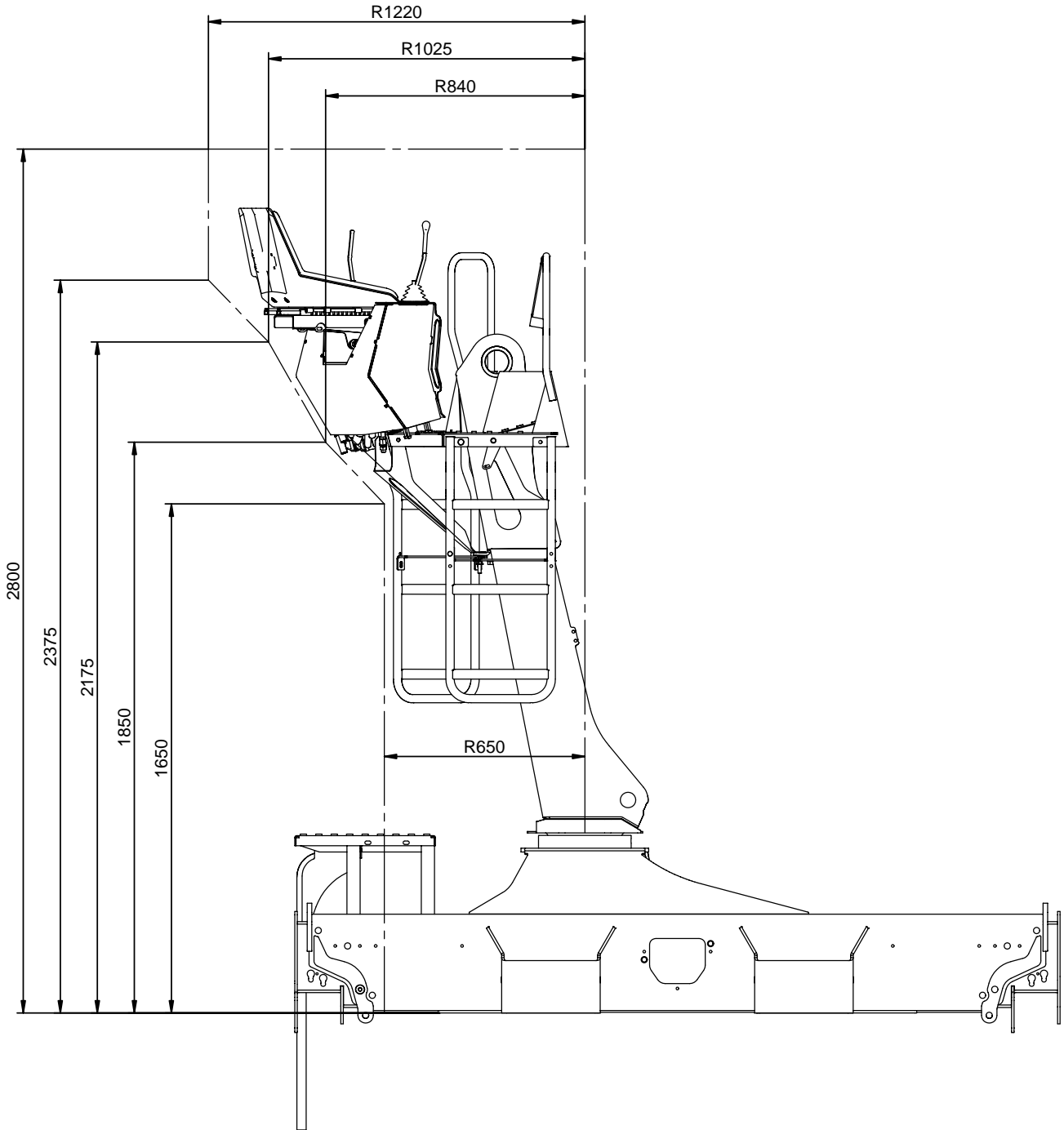
1


8145

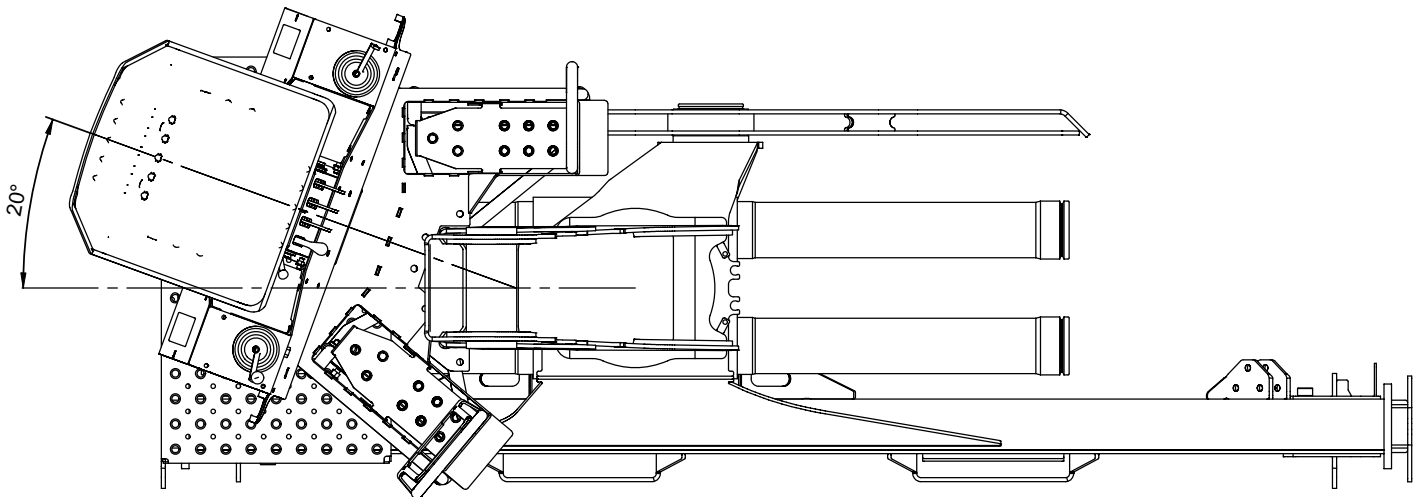
1244/1444/1643 Z

1 (1)

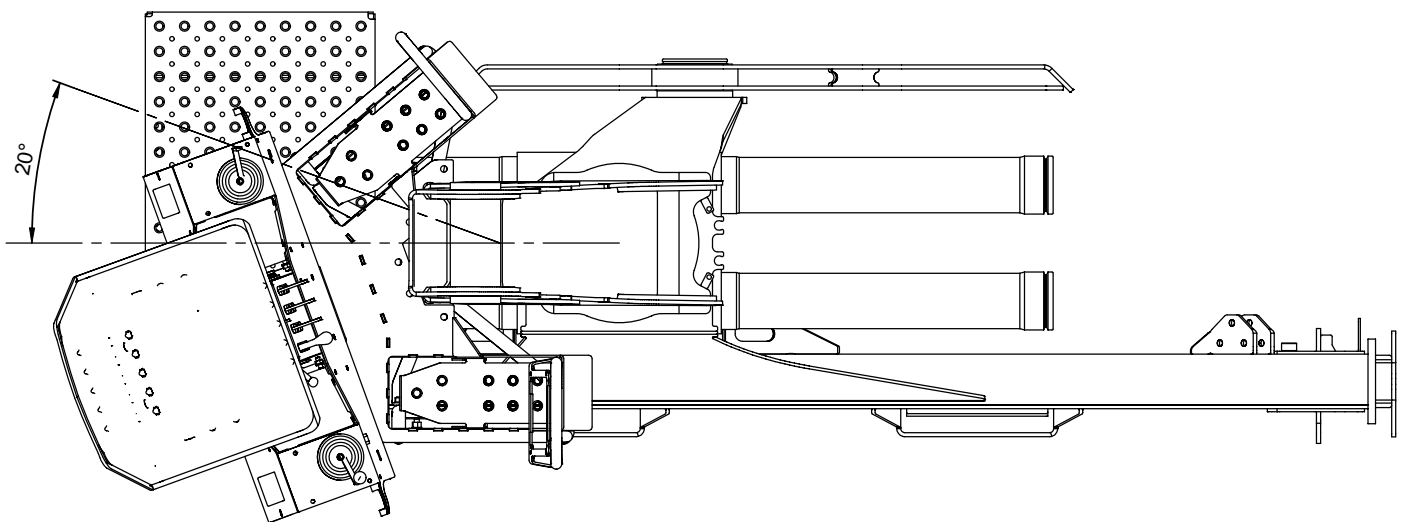
08.03.2007



	1244/1444/1643		
	3	1	8146
	Placering af topsæde (TS) Position of top seat (TS) Platzierung des Hochsitzes (TS)		
	1 (1)		
	06.03.2008		



TS bag søjle til venstre.
 TS behind the column to the left.
 TS hinter Säule links.



TS bag søjle til højre.
 TS behind the column to the right.
 TS hinter Säule rechts.



1244/1444/1643

3

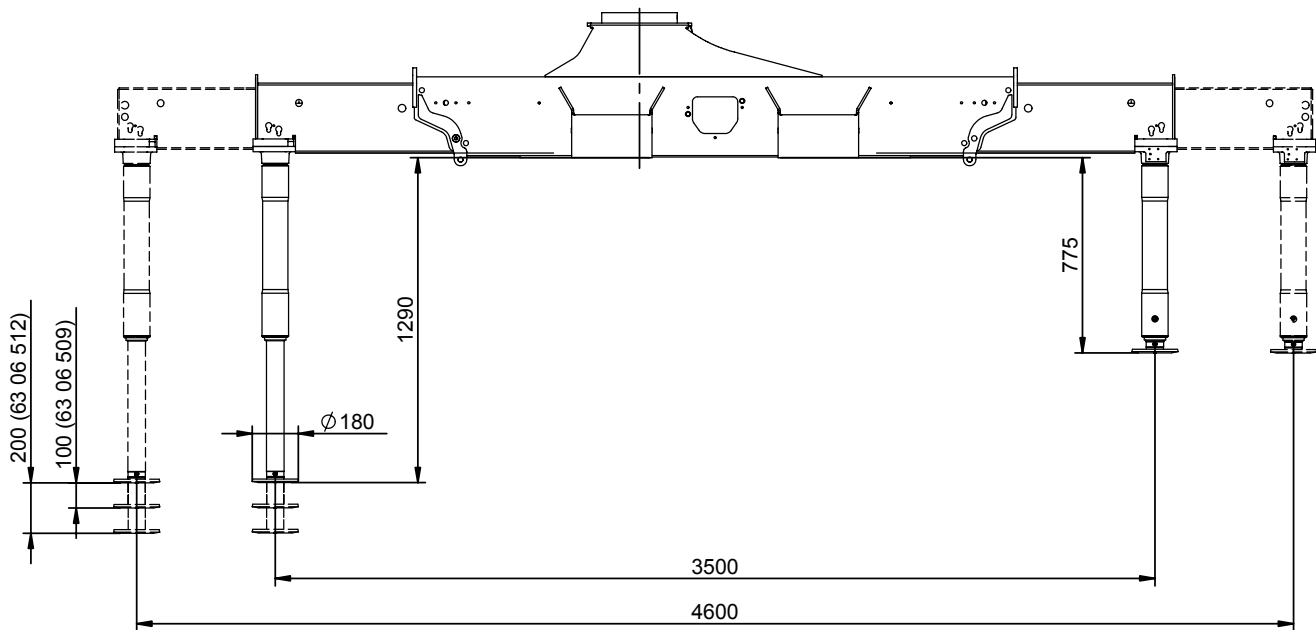
1

8150

A=3500/4600

1 (1)

02.05.2006





1244/1444/1643

3

1

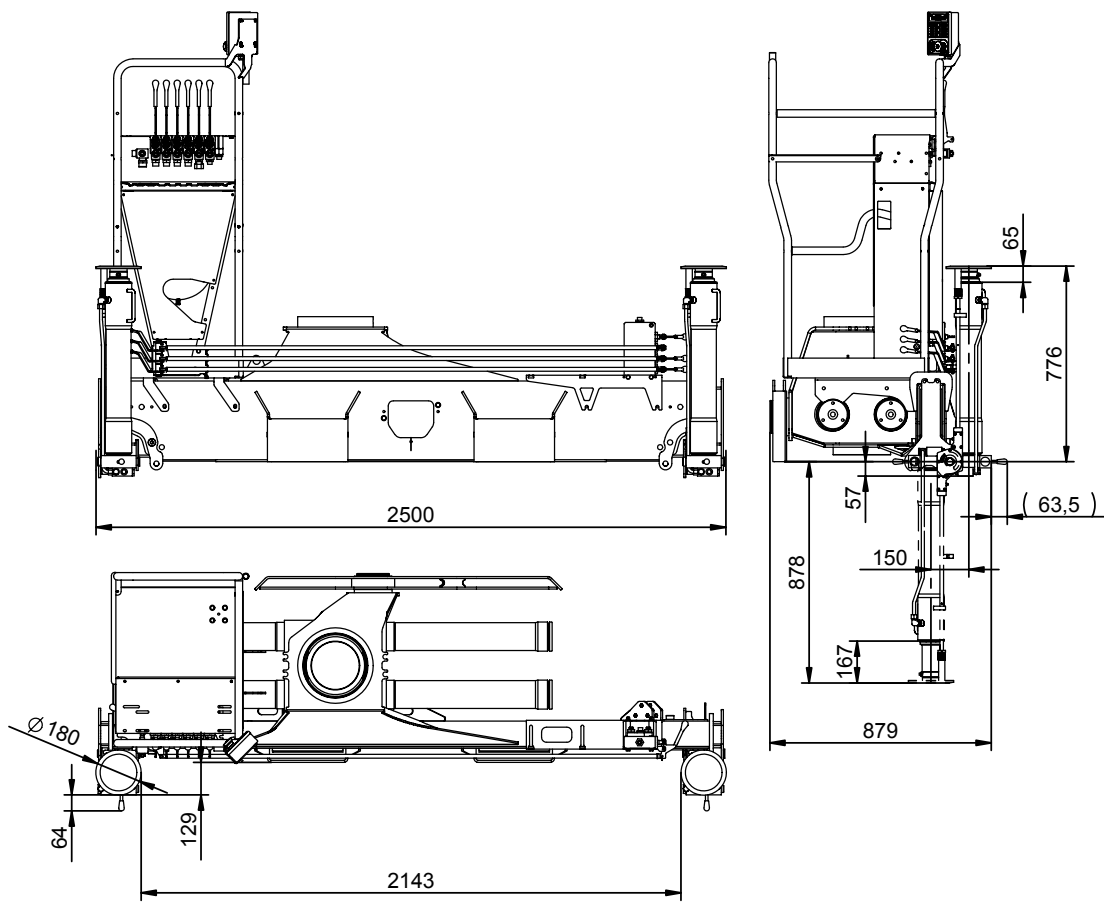
8152


1244/1444/1643

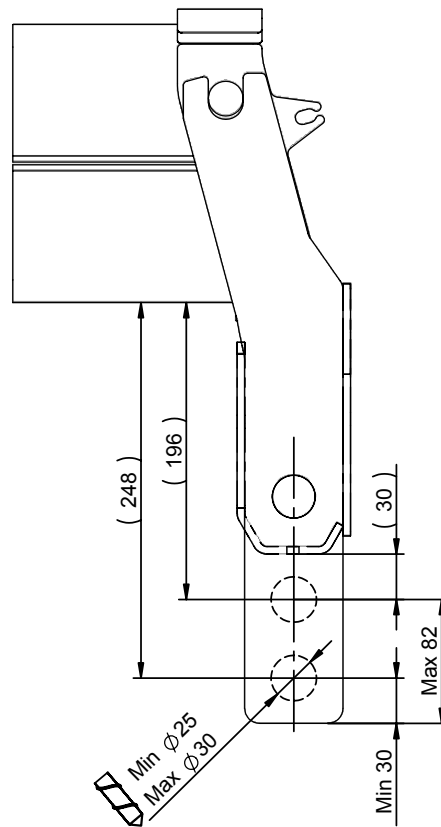
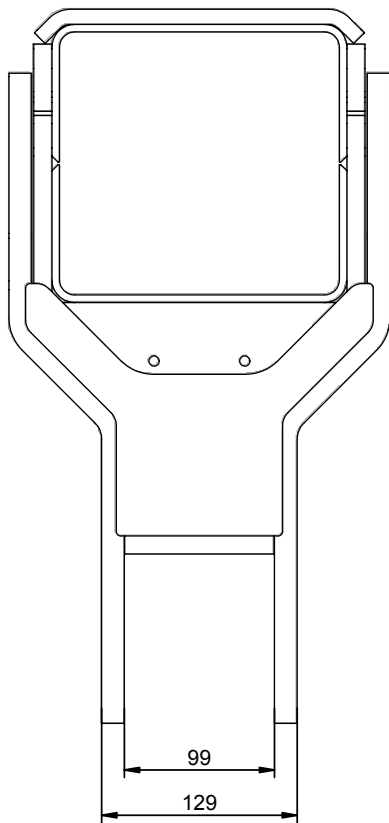
1 (1)

01.12.2006

"Z"



	1244/1444/1643		3	1	8160
	Forlænget krogophæng, Z2 Extended hook suspension, Z2 Verlängerte Hakenaufhängung, Z2			1 (1)	
				02.05.2006	





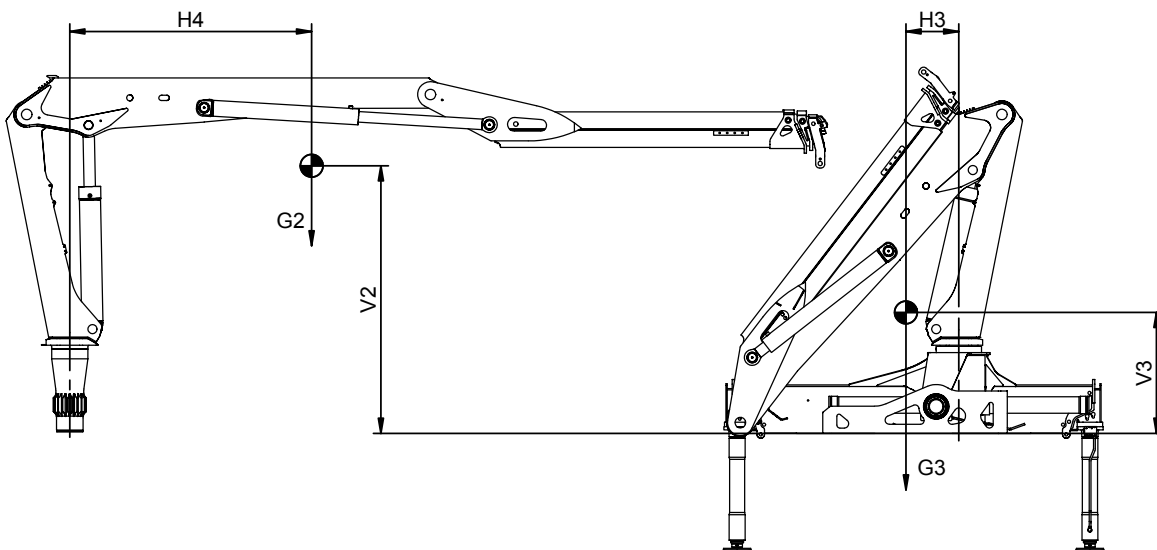
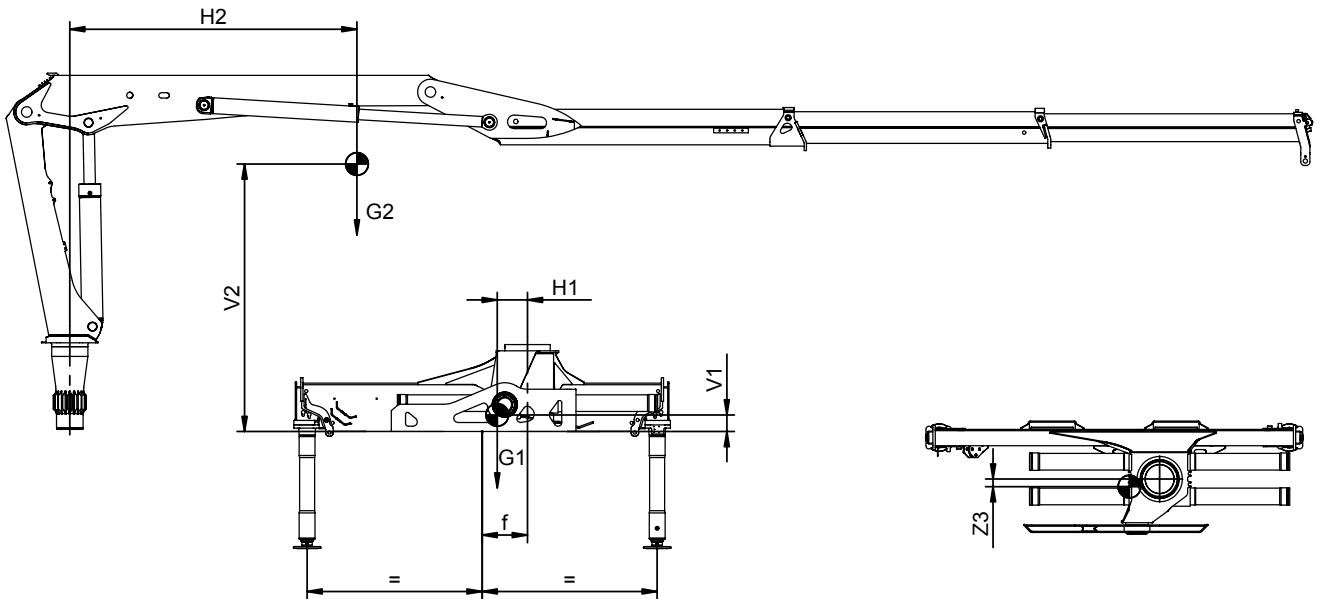
1244/1444/1643

3 | 1 | 8175

Tyngdepunkter
Centres of gravity
Schwerpunkte

1 (1)

02.05.2006



	[mm]									[kg]		
	V1	V2	V3	H1	H2	H3	H4	Z3	f	G1	G2	G3
1244 Z1	110	1750	670	205	1510	390	1325	50	300	740	1000	1740
1244 Z2	110	1780	715	205	2090	400	1610	50	300	740	1110	1850
1244 ZC1	110	1750	-	10	1510	-	1325	-	0	740	1000	1740
1244 ZC2	110	1780	-	10	2090	-	1610	-	0	740	1110	1850
1444/1643 Z2	110	1785	925	205	2210	330	1780	65	300	740	1210	1950
1444/1643 ZC2	110	1785	-	10	2210	-	1780	-	0	740	1210	1950